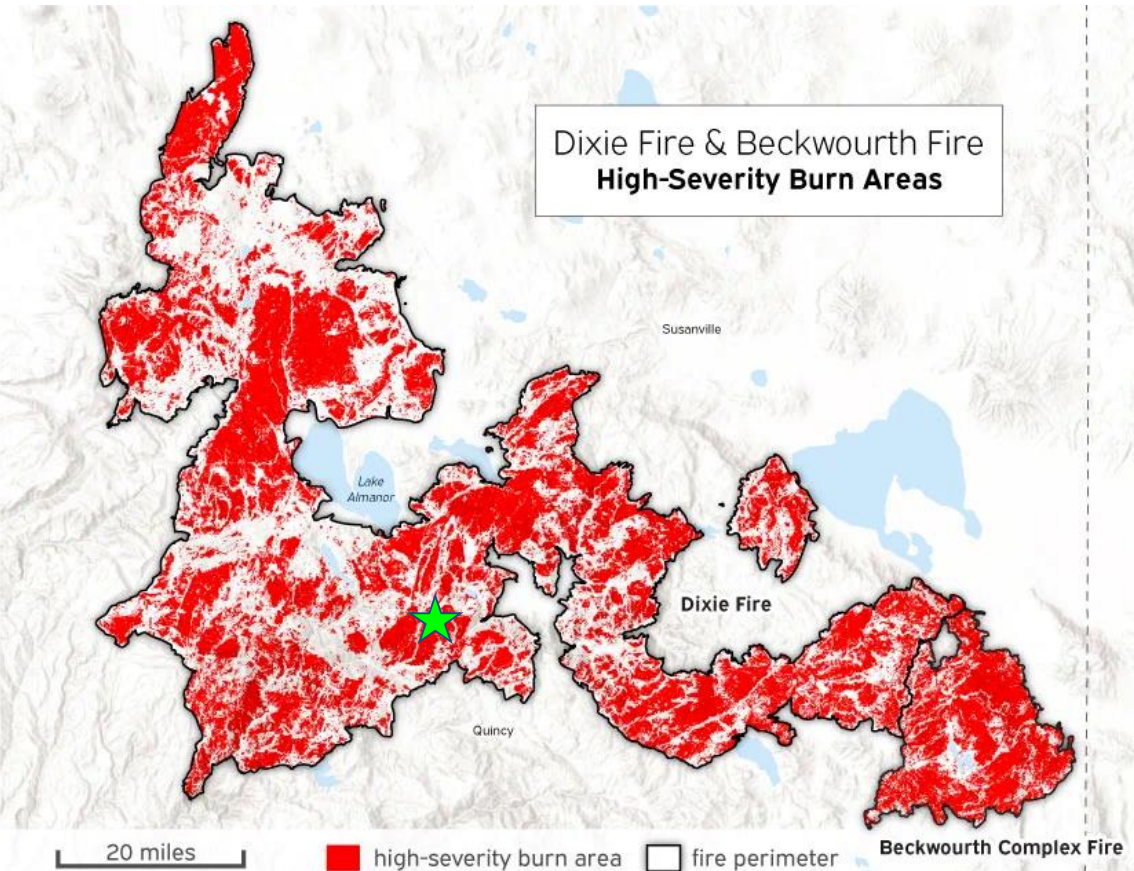


Dixie Wildfire 2021

Wood Fiber on the Frontier

- Fire Perimeter
- National Park
- Populated Area
- Forested Area





Pinus ponderosa



Calocedrus decurrens

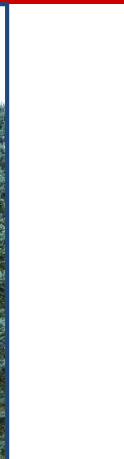


Pseudotsuga mensenzii

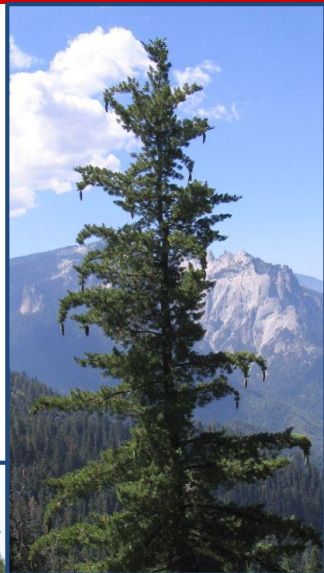
Conifer Species



Abies concolor



Pinus taeda



Pinus lambertiana







Pinus lambertiana

Calocedrus decurrens

*Pseudotsuga
menseszii*

Pinus ponderosa

Abies concolor



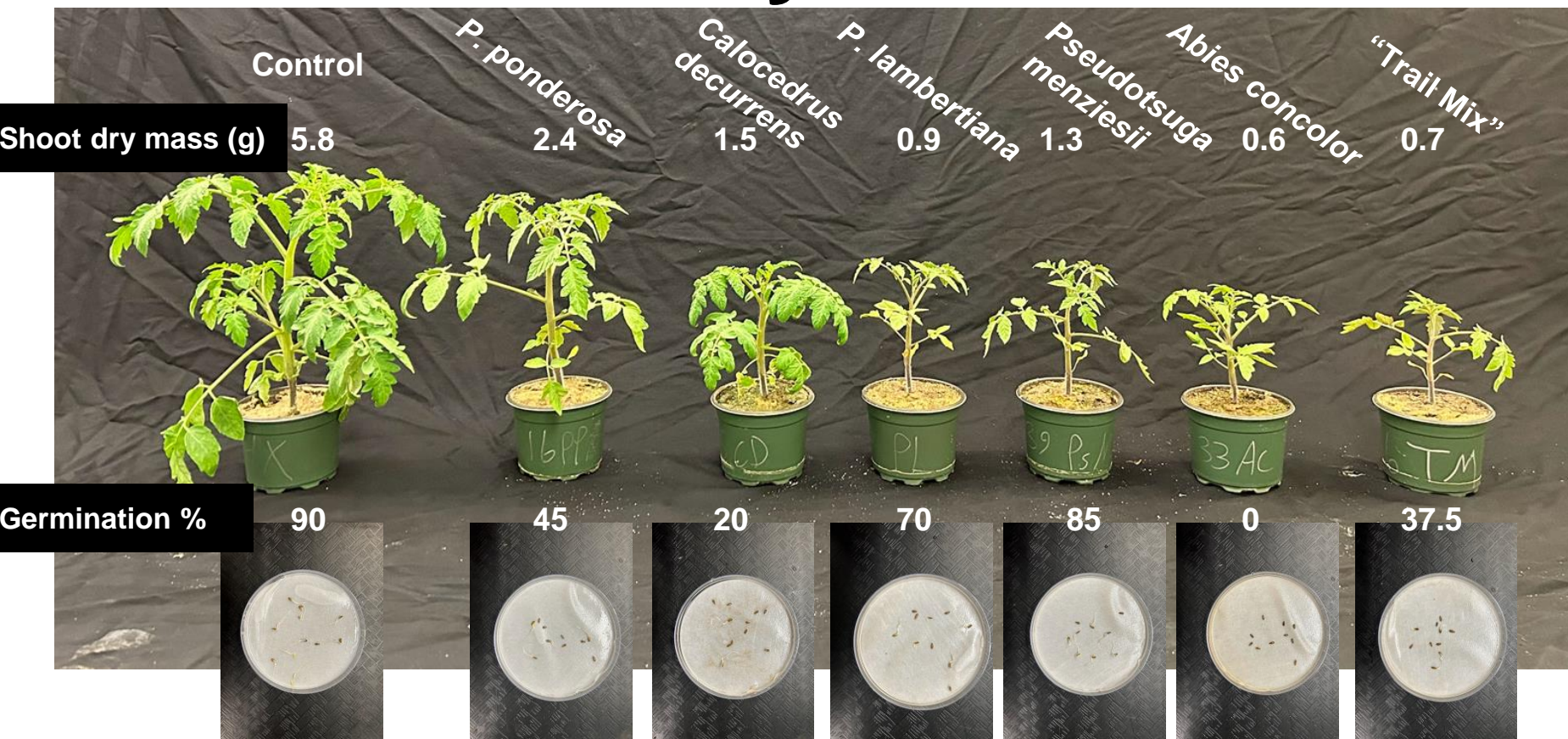
Trail Mix

Sand Culture



Bioassay Round 1

*"fresh" wood



Bioassay Round 2

*wood aged for 7 weeks

Shoot
dry
mass (g)

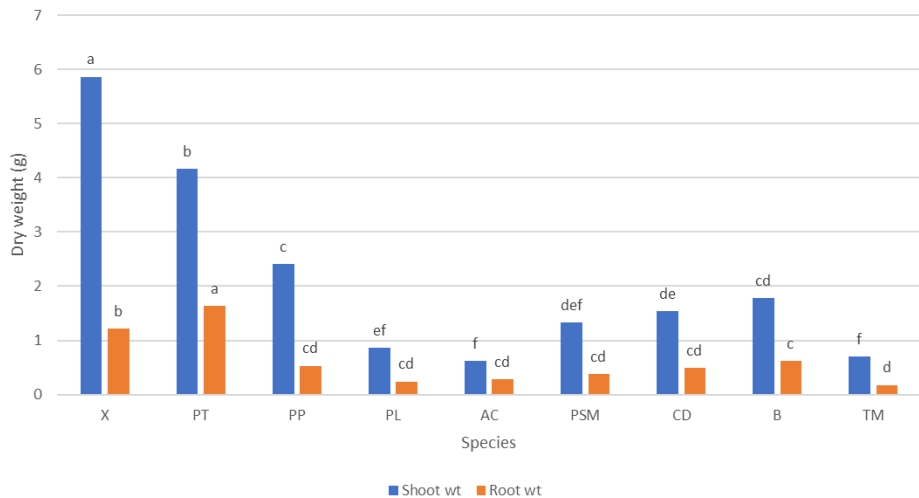


Germination %

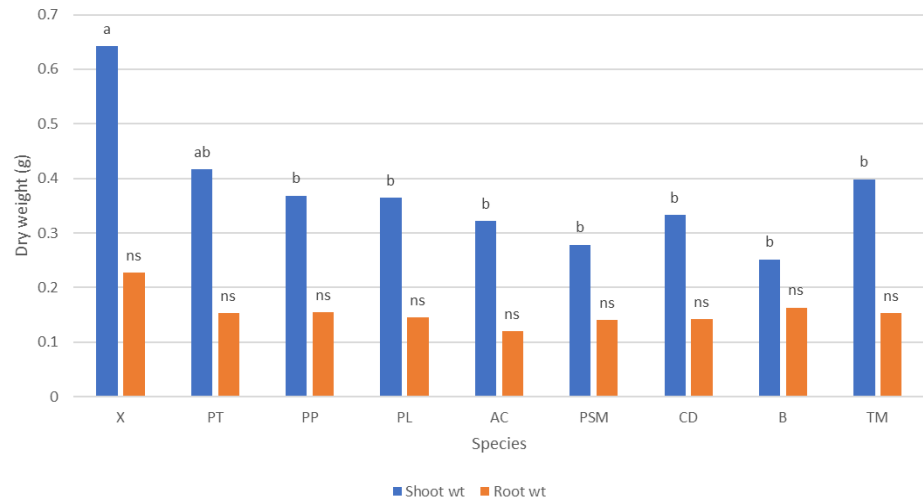
95 87.5 87.5 22.5 82.5 85 82.5



Tomato Sand Culture Round 1



Tomato Sand Culture Round 2



- Round 1 was grown for 22 days, round 2 for 15 days
- X= Control, PT= *P. taeda*, PP= *P. ponderosa*, PL=*P. lambertiana*, AC= *Abies concolor*, PsM= *Pseudotsuga menziesii*, CD= *Calocedrus decurrens*, B= Burnt, TM= Trail Mix
- Means not sharing a letter are statistically different, ns= not significant

Marigold growth trial

Important to note:

- Mixes containing 25% and 50% with the same wood species were also utilized but their dry masses were not statistically different
- These were grown in fresh wood mixes; this trial will be replicated in late August after wood has been given time to age (~3 months)

